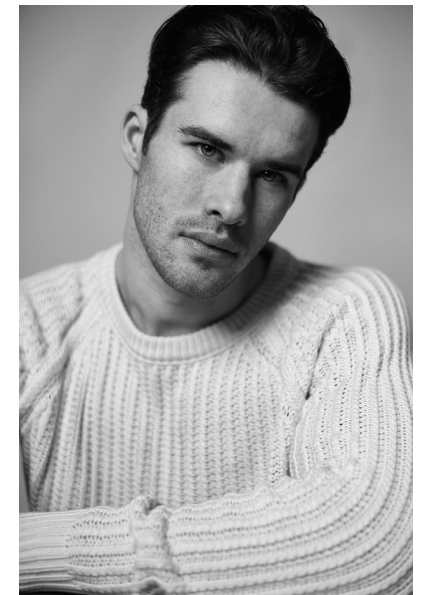
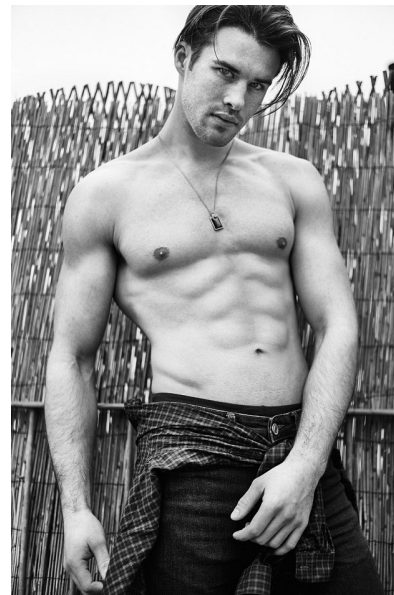




JAMES GILLICK

Height 188cm/6'2" Chest 94cm/37" Waist 76cm/30" Collar 39cm/15.5"
Shoe 9.5 UK Hair Brown Eyes Blue/Grey



BAMEMODELS

BAME Models, Studio 1a, 1 Stapleton Hall Road, London, N4 3QE
Landline: +44 0207 190 9612